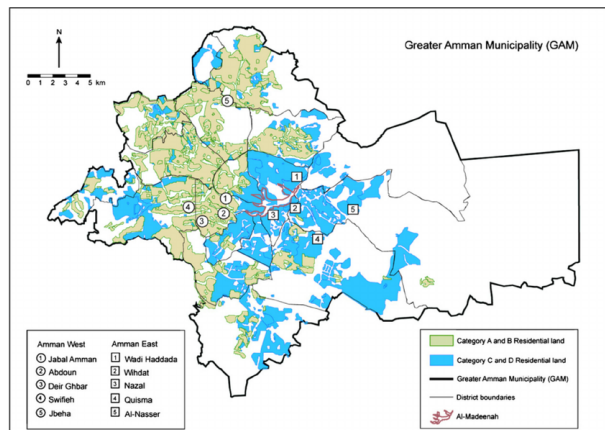


# AMMAN, JORDAN

## Spring Intensive, 16-25 March 2018

### Manufacturing Landscapes: The Politics and Practices of the Jordan Refugee Compact



#### Project Description

*Does advocating for refugee economic programs facilitate exploitation?*

*What is the relationship between the body of the individual and capitalist production?*

*How does market logic guide humanitarian action?*

This Fieldwork Spring Intensive is an ethnographic study of the impact of development projects in one of the world's major refugee host country regions in Jordan offered by faculty at The New School's Zolberg Institute on Migration and Mobility. The creation of special economic zones (SEZs) – in which refugees are provided with the right to work, while trade partners such as the European Union give trading concessions on manufactured products – has been globally championed as an innovative alternative to refugee camps, as well as to protracted refugee situations. This project will use ethnographic field methods and global production theory to examine if SEZs represent progress towards realizing mobility rights for displaced persons or another move towards capturing the market and labor power ideals.

The Fieldwork Spring Intensive will be offered to a maximum of two senior undergraduate or graduate students. Students must be available for a small number of workshops during term time and for travel to Amman over the Spring break to conduct interviews with involved personnel. Outputs will include (1) a group paper for publication in a high impact journal, (2) a conference and seminar presentation. Funding will be available to cover the costs of travel, accommodation and transport.

Interested students should send an expression of interest to Julia Morris ([julia.morris@newschool.edu](mailto:julia.morris@newschool.edu)) by **31 January 2018** that includes (1) a CV or transcript with courses and grades and (2) a one-page statement on why they wish to participate in the fieldwork study including how it would benefit them professionally, and how they might envisage contributing to the project. Students will be invited for informal interviews at the beginning of February.